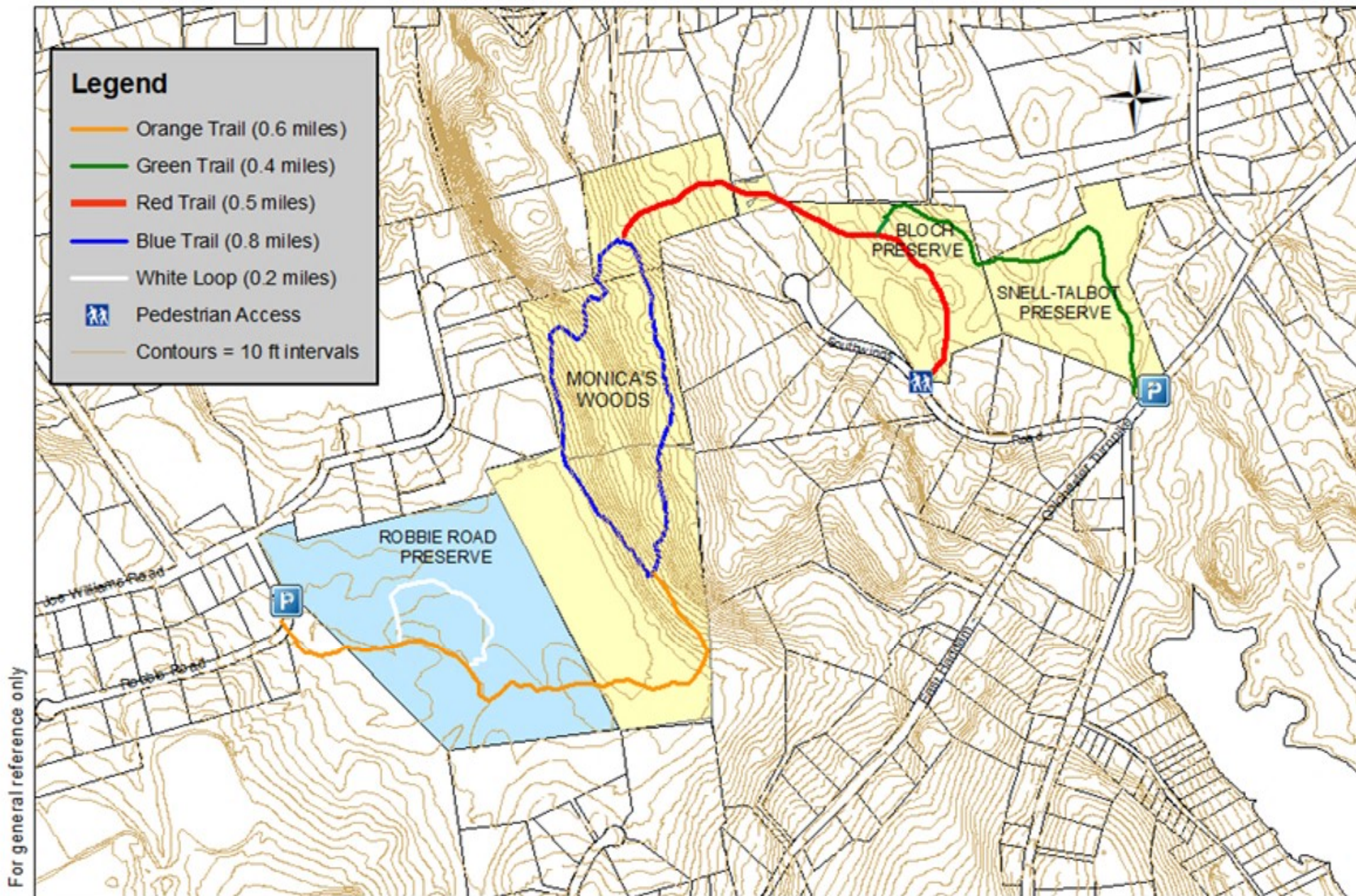
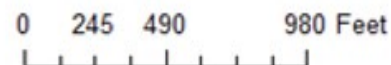


THE MOODUS FOREST

ROBBIE ROAD PRESERVE, MONICA'S WOODS, BLOCH PRESERVE, SNELL-TALBOT PRESERVE



Managed by EAST HADDAM LAND TRUST
Managed by EAST HADDAM CONSERVATION COMMISSION



THE MOODUS FOREST

Robbie Road Preserve, Monica's Woods, Bloch Preserve, Snell-Talbot Preserve

There will be two parking areas for The Moodus Forest: one on Robbie Road, 100 yards south of Joe Williams Road, near the center of the village of Moodus, and the other on East Haddam-Colchester Turnpike, just east of Southwinds Road. For the time being, parking along the roadside on Robbie Road is recommended.

Pedestrian access, via the Bloch Preserve, can also be found on Southwinds Road.

For more information or to report any problems during your visit, please contact either the East Haddam Land Trust at (860) 484-3458 or the East Haddam Land Use Office at (860) 873-5031.

Trail Facts:

The orange trail passes through wildlife-filled wetlands as well as mature woodlands on higher ground. The white loop trail follows the edge of a dense and undisturbed swamp and offers excellent opportunities for birdwatching. The blue loop trail traverses a steep hillside and hikers should expect significant elevation changes. The red and green trails feature more moderate terrain. All trails offer a variety of forest types.

NOTE: No Hunting is permitted in The Moodus Forest. Hunting is prohibited on all land trust preserves, and is not allowed on the town-owned Robbie Road Preserve because of this property's proximity to local schools.

Permitted Activities:

- ◆ Hiking
- ◆ Nature study
- ◆ Snowshoeing
- ◆ Birding
- ◆ Photography

No motorized vehicles are allowed in The Moodus Forest.



EAST HADDAM
YOUTH AND FAMILY
SERVICES

EAST HADDAM TRAILS

THE MOODUS FOREST

Robbie Road Preserve, Monica's Woods, Bloch Preserve, Snell-Talbot Preserve

The 99-acre Moodus Forest is jointly managed by East Haddam Land Trust (EHLT) and the East Haddam Conservation Commission. It comprises four separate conservation properties: Robbie Road Preserve (town open space), and three EHLT parcels: Monica's Woods, Bloch Preserve and Snell-Talbot Preserve.

The 29.69-acre Robbie Road Preserve was purchased by the Town of East Haddam in 1998.

The 44.2-acre Monica's Woods was acquired by EHLT from Ira M. Sakolsky, Marti Smith and Thomas P. Smith, Jr. in 2018.

The 13.12-acre Bloch Preserve was acquired by EHLT from Philip J. Bloch, Anthony Bloch, and Deborah A. Bloch in 2015 and 2018.

The 12.08-acre Snell-Talbot Preserve was donated to EHLT by Elsie T. Snell in 2022.

